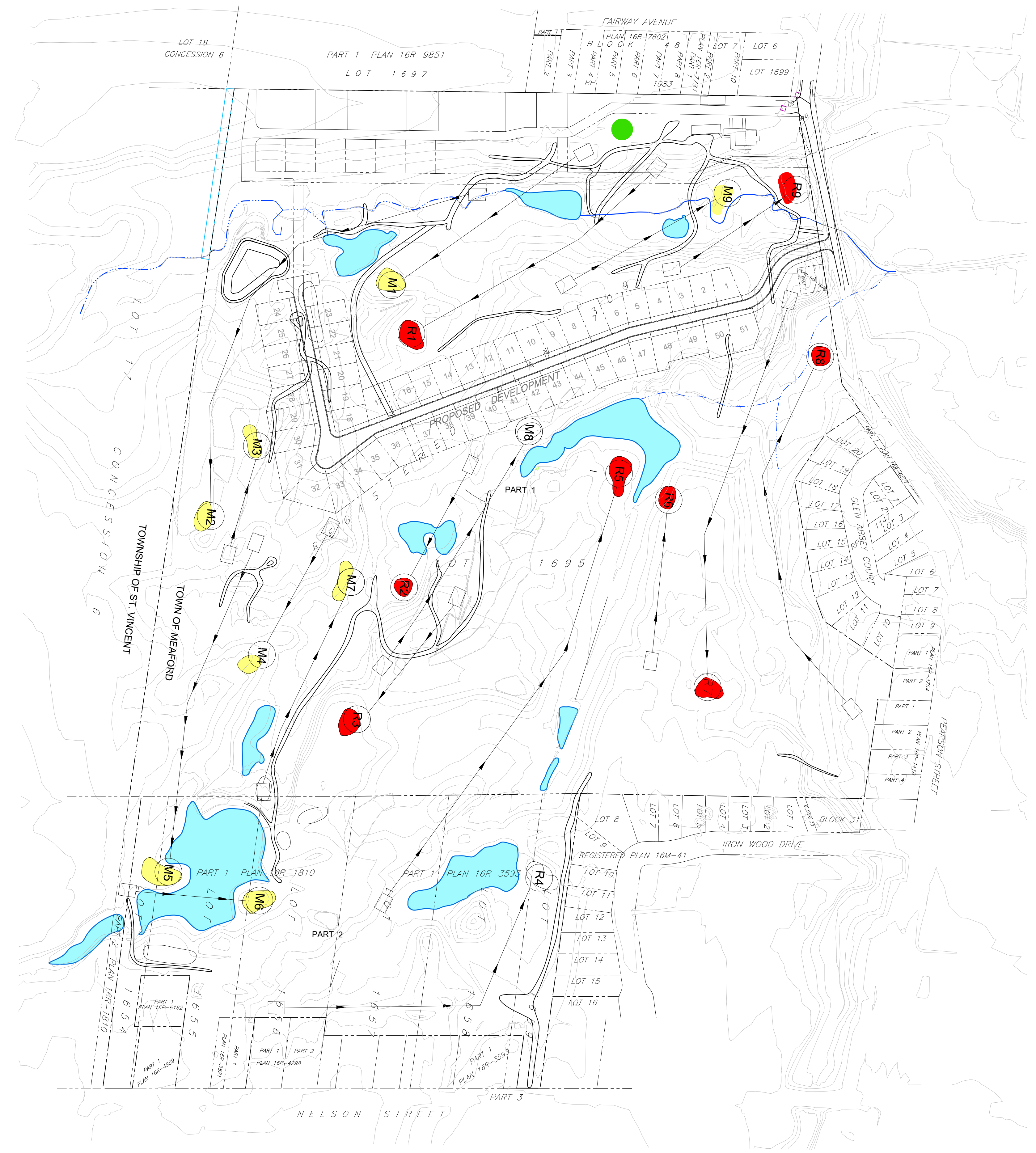
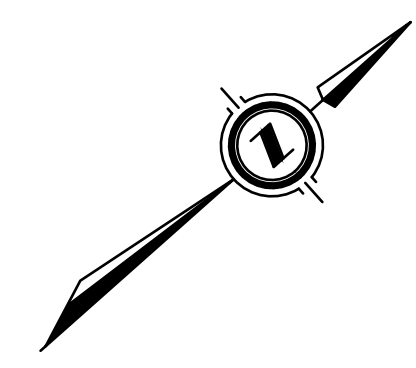


CAUTION:
THE POSITION OF POLE LINES, CONDUITS, WATERMAINS, SEWERS AND OTHER UNDERGROUND AND OVERGROUND UTILITIES AND STRUCTURES IS NOT NECESSARILY SHOWN ON THE DRAWINGS, AND, WHERE SHOWN, THE ACCURACY OF THE POSITION OF SUCH UTILITIES AND STRUCTURES IS NOT GUARANTEED. BEFORE STARTING WORK, THE CONTRACTOR SHALL INFORM HIMSELF OF THE EXACT LOCATION OF ALL SUCH UTILITIES AND STRUCTURES, AND SHALL ASSUME ALL LIABILITY FOR DAMAGE TO THEM.

Notes
1. TOPOGRAPHIC INFORMATION DERIVED FROM FIELD SURVEY BY COBIDE ENGINEERING INC. COMPLETED ON NOV. 21, 25, AND DEC. 12, 2019 AND PLANBY GSS ENGINEERING DATED FEBRUARY 13, 2016.



PHASE 1 ROUTING TEES			
M1	PAR 4	R1	PAR 4
M2	PAR 5	R2	PAR 3
M3	PAR 3	R3	PAR 4
M4	PAR 3	R4	PAR 5
M5	PAR 5	R5	PAR 5
M6	PAR 3	R6	PAR 3
M7	PAR 4	R7	PAR 4
M8	PAR 4	R8	PAR 5
M9	PAR 3	R9	PAR 3
SUM	34	SUM	36
		TOTAL	70

Benchmark Information

BM1	ON METAL POST SOUTH WEST CORNER OF DECK AT CLUB HOUSE.	ELEVATION	197.79m
BM2	TOP OF GRATE OF SANITARY MANHOLE (SMMH-109) AT THE INTERSECTION OF THE SERVICING ACCESS ROUTE FROM AREA A AND THE SANITARY EASEMENT FOR AREA B.	ELEVATION	196.61m
BM3	TOP OF SIB LOCATED ON THE SOUTH EAST CORNER OF HILTON HEAD HEIGHTS AND RIDGE ROAD.	ELEVATION	193.45m

No.	DATE	DESCRIPTION	BY	APPD
0	SEP 120	PRELIMINARY SUBMISSION	TLB	SJC
REVISION / ISSUE				

Seal not valid unless signed and dated



Title: **MEAFORD GOLF COURSE & PROPOSED DEVELOPMENT**
Municipality of Meaford
LAYOUT PLAN

Client:	
Design:	LFP
Drawn:	LFP
Checked:	TLB
Date:	SEP 2020
Scale:	1:2000
Approved:	
Design Engineer:	
DRAWING No.	02703-LP1

\\SERVER\COBIDE\CAD\Drawings\Drawings\Submissions\2020-05-15\Hilton Head Heights\02703-LP1.dwg Sep 01, 2020 4:04pm