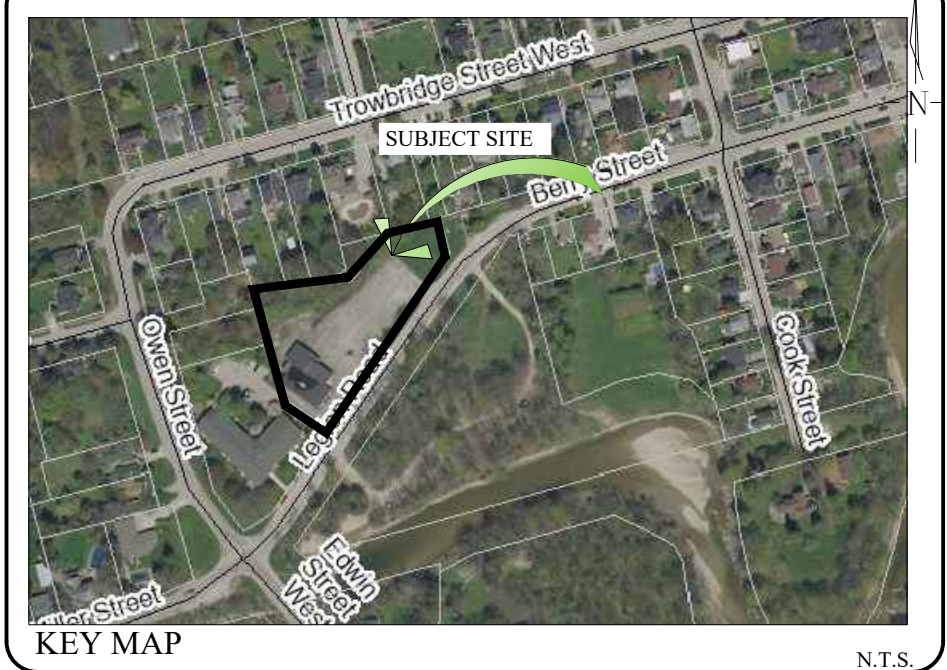


1 Legion Rd., August 2020

| Tree # | Nr. of trees | Botanical Name             | Common name         | DBH cm    | Height m | Crown O (m) | Maturity | Health conditions | Location          | Preservation level    |          |
|--------|--------------|----------------------------|---------------------|-----------|----------|-------------|----------|-------------------|-------------------|-----------------------|----------|
| 1      | 1            | <i>Acer platanoides</i>    | Crimson King Maple  | 37        | 8        | 7           | Mature   | fair              | under hydro lines | Municipal land        | Remove   |
| 2      | 1            | <i>Acer platanoides</i>    | Crimson King Maple  | 26        | 8        | 7           | Mature   | fair              | under hydro lines | Municipal land        | Remove   |
| 3      | 1            | <i>Pinus sylvestris</i>    | Scots Pine          | 30        | 7        | 4           | Mature   | fair-poor         |                   | 2m on adjacent site   | Preserve |
| 4      | 1            | <i>Pinus sylvestris</i>    | Scots Pine          | 30        | 7        | 4           | Mature   | fair-poor         |                   | 2m on adjacent site   | Preserve |
| 5      | 2            | <i>Fraxinus americana</i>  | White Ash           | 20, 30-35 | 12       | 14          | Mature   | fair              |                   | 5m on adjacent site   | Preserve |
| 6      | 1            | <i>Acer negundo</i>        | Manitoba Maple      | 23        | 25       |             | stump    |                   |                   | on site               | Preserve |
| 7      | 2            | <i>Fraxinus americana</i>  | White Ash           | 10        | 8        | 5           | Imature  | fair              |                   | 0.5m to PL            | Remove   |
| 8      | 1            | <i>Fraxinus americana</i>  | White Ash           | 15        | 8        | 6           | Imature  | poor              | bark damages      | on site               | Remove   |
| 9      | 1            | <i>Fraxinus americana</i>  | White Ash           | 13        | 10       | 10          | Imature  | fair              |                   | 1.5m on adjacent site | Remove   |
| 10     | 1            | <i>Papulus tremuloides</i> | Trembling Aspen     | 25        | 12       | 8           | Mature   | fair              |                   | 4m on adjacent site   | Preserve |
| 11     | 1            | <i>Fraxinus americana</i>  | White Ash           | 50        | 12       | 14          | Mature   | fair-poor         |                   | North side of ditch   | Remove   |
| 12     | 1            | <i>Thuja occidentalis</i>  | Eastern White Cedar | 30        | 12       | 8           | Mature   | fair-poor         | leaning           | North side of ditch   | Remove   |
| 13     | group        | <i>Acer negundo</i>        | Manitoba Maple      | 20        | 6        | 7           | Mature   | poor              | leaning           | ditch                 | Remove   |
| 14     | 1            | <i>Fraxinus americana</i>  | White Ash           | 85        | 12       | 14          | Mature   | fair-poor         |                   | PL                    | Remove   |
| 15     | 1            | <i>Acer saccharum</i>      | Sugar Maple         | 30        | 12       | 10          | Mature   | fair              |                   | 2m to PL              | Preserve |
| 16     | 1            | <i>Fraxinus americana</i>  | White Ash           | 70        | 16       | 14          | Mature   | fair-poor         |                   | PL                    | Preserve |
| 17     | 1            | <i>Ostrya virginiana</i>   | Ironwood            | 25        | 12       | 7           | Mature   | fair              |                   | 1m to PL              | Preserve |
| 18     | 2            | <i>Fraxinus americana</i>  | White Ash           | 49, 64    | 12       | 14          | Mature   | fair-poor         |                   | PL                    | Preserve |
| 19     | 1            | <i>Acer saccharum</i>      | Sugar Maple         | 35        | 12       | 10          | Mature   | fair              |                   | 3.4m to PL            | Preserve |
| 20     | 1            | <i>Acer saccharum</i>      | Sugar Maple         | 16        | 12       | 8           | Imature  | fair-good         |                   | 2m on adjacent site   | Preserve |
| 21     | 1            | <i>Acer saccharum</i>      | Sugar Maple         | 20-15-10  | 12       | 12          | Mature   | fair              |                   | 6m to PL              | Remove   |
| 22     | 1            | <i>Fagus grandifolia</i>   | American Beech      | 20        | 12       | 6           | Mature   | poor              | bark damages      | 3m to PL              | Preserve |
| 23     | 2            | <i>Fraxinus americana</i>  | White Ash           | 39, 32    | 14       | 8           | Mature   | fair              |                   | PL                    | Preserve |
| 24     | 1            | <i>Acer saccharum</i>      | Sugar Maple         | 20        | 12       | 8           | Mature   | fair              |                   | 2.5m to PL            | Preserve |
| 25     | 1            | <i>Fraxinus americana</i>  | White Ash           | 64        | 14       | 12          | Mature   | fair              |                   | PL                    | Preserve |
| 26     | 1            | <i>Acer saccharum</i>      | Sugar Maple         | 43        | 14       | 12          | Mature   | fair-good         |                   | PL                    | Preserve |
| 27     | 3            | <i>Fraxinus americana</i>  | White Ash           | 30        | 14       | 12          | Mature   | fair              |                   | PL                    | Remove   |
| 28     | 1            | <i>Acer saccharum</i>      | Sugar Maple         | 23        | 10       | 8           | Mature   | fair-good         |                   | 2m on adjacent site   | Preserve |
| 29     | 1            | <i>Acer saccharum</i>      | Sugar Maple         | <35       | 12       | 12          | Mature   | fair              | clump             | 2m on adjacent site   | Preserve |
| 30     | 1            | <i>Acer negundo</i>        | Manitoba Maple      | <20       | 8        | 8           | Mature   | poor              | leaning           | ditch                 | Remove   |
| 31     | 3            | <i>Fraxinus americana</i>  | White Ash           | 2x18      | 11       | 7           | Mature   | poor              | forked at base    | PL                    | Remove   |
| 32     | 1            | <i>Acer negundo</i>        | Manitoba Maple      | 28        | 10       | 14          | Mature   | poor              | leaning           | PL                    | Remove   |
| 33     | 1            | <i>Acer negundo</i>        | Manitoba Maple      | 28        | 10       | 14          | Mature   | poor              | leaning           | PL                    | Remove   |
| 34     | 1            | <i>Acer negundo</i>        | Manitoba Maple      | 19        | 10       | 14          | Imature  | poor              | clump, leaning    | PL                    | Remove   |
| 35     | 1            | <i>Acer saccharum</i>      | Sugar Maple         | 32        | 12       | 12          | Mature   | fair-good         |                   | 0.3m to PL            | Remove   |
| 36     | 1            | <i>Acer negundo</i>        | Manitoba Maple      | 19        | 10       | 14          | Imature  | poor              | clump, leaning    | 3.5m to PL            | Remove   |
| 37     | 1            | <i>Fraxinus americana</i>  | White Ash           | 35        | 14       | 14          | Mature   | fair              |                   | 1.5m on adjacent site | Remove   |
| 38     | 1            | <i>Acer negundo</i>        | Manitoba Maple      | 19        | 10       | 14          | Imature  | poor              | clump, leaning    | 1.5m to PL            | Remove   |
| 39     | hedge        | <i>Thuja occidentalis</i>  | Eastern White Cedar | <5        | 2        | 2           | Mature   | poor              |                   | 0.5m on adjacent site | Preserve |



GENERAL NOTES

CONTRACTOR IS RESPONSIBLE FOR ALL LOCATES INCLUDING ALL UNDERGROUND SERVICES PRIOR TO ANY EXCAVATION OR INSTALLATIONS. THE CONTRACTOR IS REQUIRED TO NOTIFY THE VARIOUS UTILITY COMPANIES 48 HOURS PRIOR TO THE COMMENCEMENT OF ANY WORK.

ANY ACCOMPANYING DOCUMENTATION RELATING TO THE LANDSCAPE PLAN AND/OR PRESERVATION PLAN SUCH AS TENDER DOCUMENTS AND CHANGE NOTICES ARE TO BE ENDORSED BY J.D.B. ASSOCIATES LIMITED PRIOR TO THE BEGINNING OF ANY SITE WORKS. IN THE EVENT THAT OF A DISCREPANCY THE DRAWING SHALL BE ASSUMED CORRECT.

IT IS THE RESPONSIBILITY OF THE PERSON OR PERSONS RESPONSIBLE FOR THE CONSTRUCTED WORKS TO NOTIFY THE LANDSCAPE ARCHITECT WHEN PREPARED FOR ANY REQUIRED INSPECTIONS AND SIGN-OFFS.

SCHEDULED MEETINGS SHALL TAKE PLACE AT THE CLOSEST MUTUALLY CONVENIENT TIME.

| No.                    | REVISION                           | DATE           | APRVD. |
|------------------------|------------------------------------|----------------|--------|
| 1.                     | CLIENT REVIEW                      | August 6, 2020 | SJT    |
| 2.                     | SUBMISSION TO THE TOWN             | Sept. 23, 2020 | MC     |
| 3.                     | RESUBMISSION AS PER COMMENTS       | May 6, 2021    | MC     |
| 4.                     | REVISIONS AS PER UPDATED SITE PLAN | June 9, 2021   | MC     |
| FINAL FOR REGISTRATION |                                    |                |        |

BASE INFORMATION PROVIDED BY: ANDREW BERMAN ARCHITECT

BASE PLAN REVISED: May 2021

ALL DRAWINGS AND SPECIFICATIONS ARE INSTRUMENTS OF SERVICE AND ARE THE PROPERTY OF J. D. B. ASSOCIATES LIMITED. DRAWINGS ARE NOT TO BE MODIFIED AND/OR REPRODUCED WITHOUT THE WRITTEN CONSENT OF J.D.B. ASSOCIATES LIMITED. REPRODUCTION OF DRAWINGS IN ANY FORM WITHOUT THE CONSENT OF J.D.B. ASSOCIATES LIMITED VIOLATES THE DRAWING AT WHICH TIME J.D.B. ASSOCIATES LIMITED ACCEPTS NO LIABILITY FOR THE DRAWING CONTENT OR WORKS RESULTING FROM SAID REPRODUCTION. DRAWINGS MAY BE REPRODUCED BY MUNICIPAL AND GOVERNMENT AGENCIES RESPONSIBLE FOR APPROVALS FOR THEIR OWN USE. J. D. B. ASSOCIATES RESERVES THE RIGHT TO WITHDRAW ANY DRAWINGS FROM GOVERNMENT OR MUNICIPAL AGENCIES WHETHER APPROVED OR NOT IN THE EVENT THAT ACCOUNTS ARE NOT SETTLED OR REMAIN OUTSTANDING.

IT IS THE RESPONSIBILITY OF THE CONTRACTOR TO VERIFY ALL DIMENSIONS ON THE SITE AND REPORT ANY DISCREPANCIES OR VARIATIONS FROM THE SUPPLIED INFORMATION TO THE LANDSCAPE ARCHITECT WITH THE PROJECT. J. D. B. ASSOCIATES LIMITED IS NOT RESPONSIBLE FOR THE ACCURACY OF SURVEY, ARCHITECTURAL, MECHANICAL, ENGINEERING OR ELECTRICAL INFORMATION SHOWN ON THE DRAWING. FOR FURTHER INFORMATION REFER TO APPROPRIATE SURVEY, ARCHITECTURAL, MECHANICAL, ENGINEERING OR ELECTRICAL DRAWINGS PRIOR TO PROCEEDING WITH ANY WORKS.

THIS DRAWING IS NOT TO BE SCALED.

DATE: \_\_\_\_\_

PRINT NAME: \_\_\_\_\_

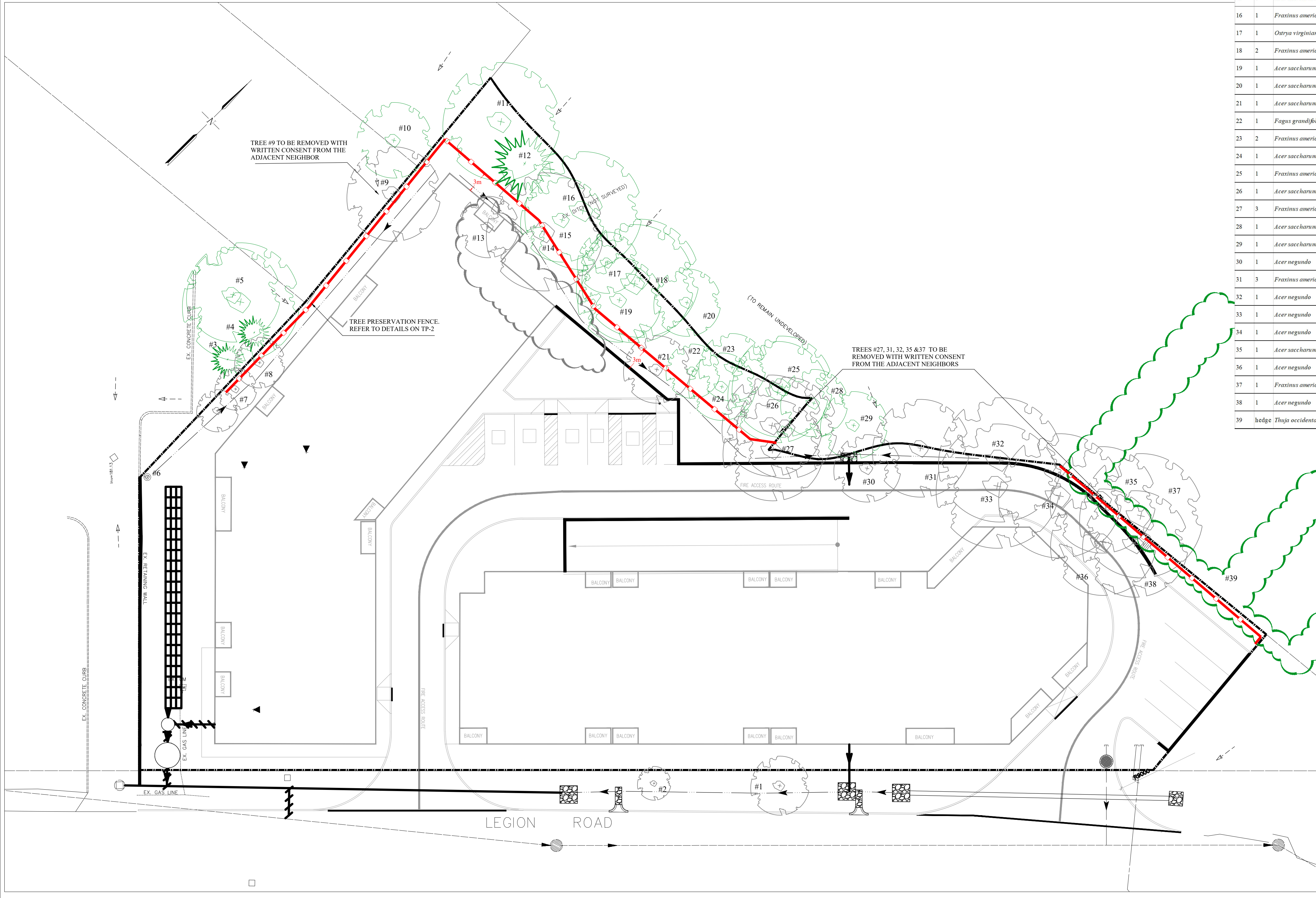
SIGNED OWNER/CLIENT: \_\_\_\_\_



**JDB ASSOCIATES LTD.**  
 Urban Designers  
 Landscape Architects  
 Arborists  
 274 Burton Ave., Suite 1201  
 Barrie, Ontario  
 L4N 5W4  
 Fax: 705-722-5660  
 Tel: 705-722-6278

**GEORGIAN BAY TERRACE**  
 1 LEGION STREET  
 MEAFORD  
**TREE INVENTORY/PRESERVATION PLAN**

| SCALE:        | DATE:           | DESIGNED BY: | REVIEWED BY: |
|---------------|-----------------|--------------|--------------|
| AS SHOWN      | August 5, 2020  | SJT          | NB           |
| TOWN FILE No. | OUR FILE REF. # | DRAWN BY:    |              |
|               | 13-20           | SJT          | TP-1         |



--- BOUNDARY. REFER TO SITE PLAN

☼ EXISTING TREES ON SUBJECT SITE TO BE REMOVED. REFER TO TREE INVENTORY LIST.

☿ EXISTING TREES SHARED WITH/ OR ON ADJACENT SITE AND HIGH VALUE TREES ON SITE TO BE PRESERVED.

— TREE PRESERVATION FENCE AS PER DETAILS AND NOTES ON TP-2.

**LEGEND**

TREE INVENTORY/ REMOVAL PLAN

SCALE 1:250