

OFFICIAL PLAN DESIGNATION

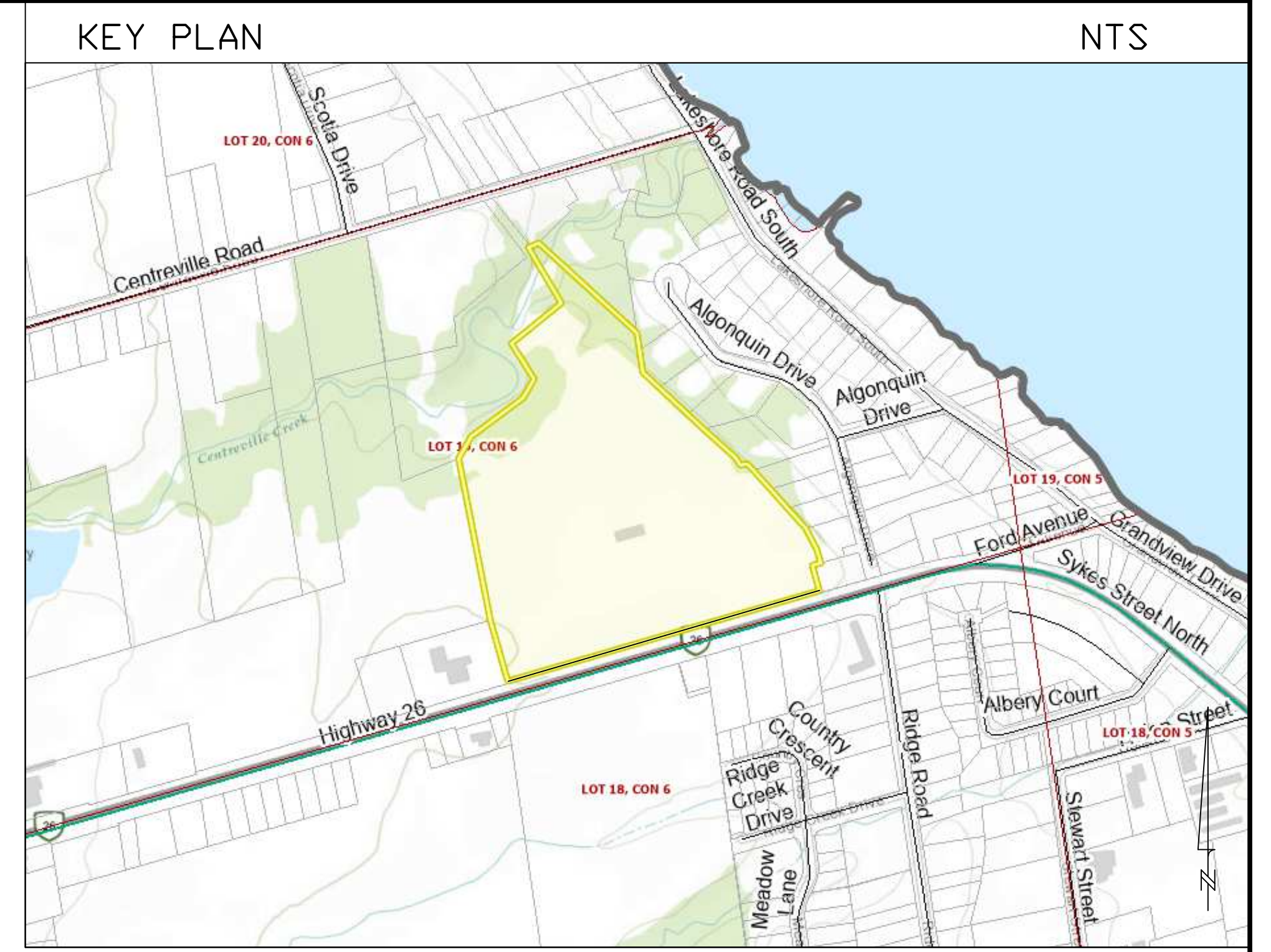
SCHEDULE ____ TO AMENDMENT NUMBER ____
TO THE OFFICIAL PLAN

PART OF LOTS 4 AND 14 OF
JUDGE'S PLAN 541
GEOGRAPHIC TOWNSHIP OF ST. VINCENT
MUNICIPALITY OF MEAFORD
COUNTY OF GREY

SCALE 1 : 750
0 10 20 30 40 50 75 METRES

PREPARED JULY 7, 2020

METRIC
DISTANCES AND COORDINATES SHOWN ON THIS PLAN ARE
IN METRES AND CAN BE CONVERTED TO FEET BY DIVIDING
BY 0.3048.



-  EP AMEND DESIGNATION (NO CHANGES)
-  URBAN HIGHWAY COMMERCIAL DESIGNATION TO URBAN LIVING AREA DESIGNATION
-  URBAN LIVING AREA DESIGNATION (NO CHANGES)

