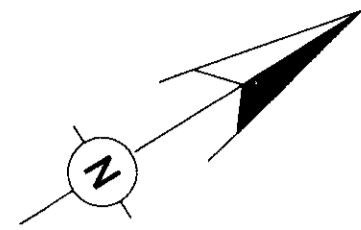


PLAN OF SURVEY
OF PART OF
ROAD ALLOWANCE
BETWEEN CONCESSION BROKEN FRONT AND
CONCESSION A SYDENHAM LYING SOUTHWEST
OF R527505 & NORTHEAST OF AN EASTERLY
EXTENT OF THE NORTHERLY LIMIT OF LOT 24
CONCESSION BROKEN FRONT SYDENHAM
AND PART OF
LOT 23 BROKEN FRONT CONCESSION
TOWNSHIP OF SYDENHAM
COUNTY OF GREY

HEWETT AND MILNE LIMITED

SCALE : 1 Inch = 100 Feet



LEGEND

- DENOTES SURVEY MONUMENT FOUND
- DENOTES SURVEY MONUMENT SET
- SIB DENOTES STANDARD IRON BAR
- SSIB DENOTES SHORT STANDARD IRON BAR
- IB DENOTES IRON BAR
- WIT DENOTES WITNESS
- H&M DENOTES HEWETT AND MILNE LTD., O.L.S.
- P1 DENOTES PLAN 16R-4635

IMPERIAL

DISTANCES SHOWN ON THIS PLAN ARE IN FEET AND CAN BE CONVERTED TO METRES BY MULTIPLYING BY 0.3048.

I REQUIRE THIS PLAN TO BE DEPOSITED UNDER THE LAND TITLES ACT.

DATE AUGUST 11th 2016

Neil C. Milne
NEIL C. MILNE, O.L.S.

PLAN 16R-10756
RECEIVED AND DEPOSITED

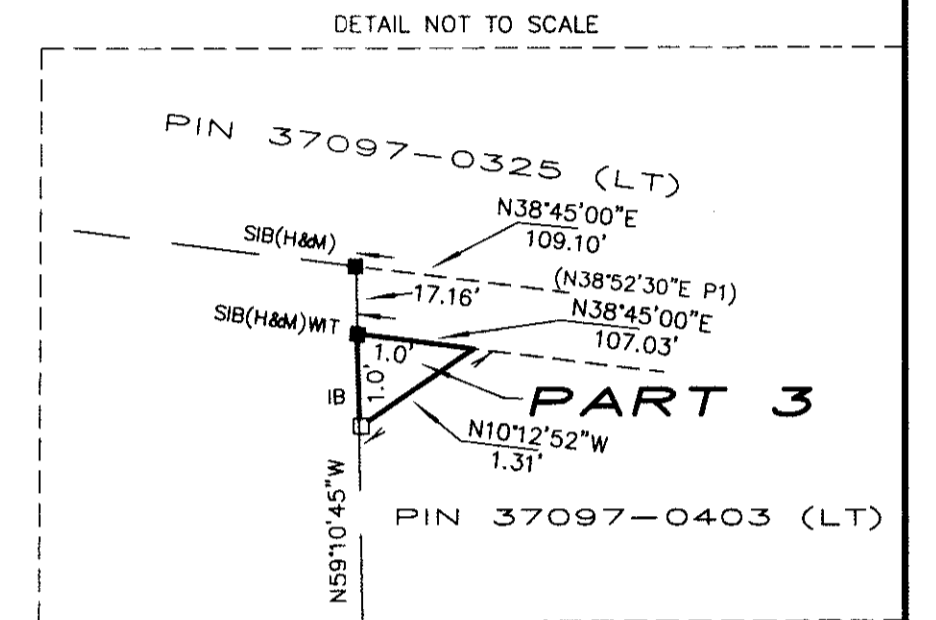
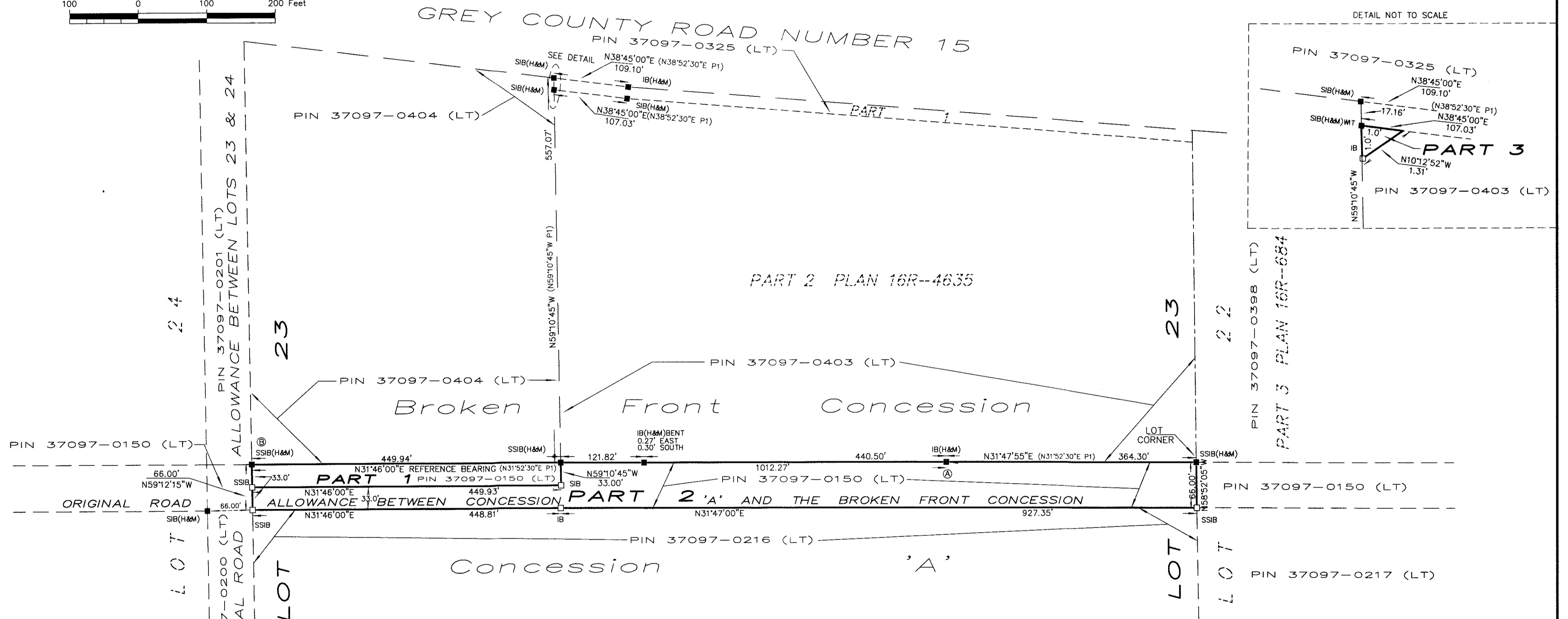
DATE Aug 11, 2016

Chris Novak
REPRESENTATIVE FOR LAND REGISTRAR FOR THE LAND TITLES DIVISION OF GREY (No. 16)

SCHEDULE OF PARTS

PART	LOT & CONCESSION	PIN
1	PART OF ROAD ALLOWANCE BETWEEN CONCESSION BROKEN FRONT AND CONCESSION A SYDENHAM LYING SOUTHWEST OF R527505 & NORTHEAST OF AN EASTERLY EXTENT OF THE NORTHERLY LIMIT OF LOT 24 CONCESSION BROKEN FRONT SYDENHAM.	PART OF 37097-0150(LT)
2	PART OF LOT 23 BROKEN FRONT CONCESSION	PART OF 37097-0403(LT)

PARTS 1 AND 2 COMPRISE PART OF PIN 37097-0150(LT)
PART 3 IS PART OF PIN 37097-0403(LT)



INTEGRATION DATA			INTEGRATION NOTES
ALL COORDINATES ARE IN METRES, ARE DERIVED FROM GPS RTK OBSERVATIONS USING THE CAN-NET NETWORK AND ARE REFERRED TO UTM ZONE 17 (81° WEST LONGITUDE) NAD83(CSRS)(1997.0). COORDINATE VALUES ARE TO A RURAL ACCURACY IN ACCORDANCE WITH SECTION 14(2) OF O.REG 216/10.			BEARINGS ARE UNIVERSAL TRANSVERSE MERCATOR (UTM) GRID, DERIVED FROM NETWORK GPS OBSERVATIONS TRANSFERRED TO MONUMENTS 'A' AND 'B' SHOWN HEREON. THE UTM GRID BEARING BETWEEN POINTS 'A' AND 'B' IS N31°46'00"E, NAD83(CSRS)(1997.0), AND IS REFERRED TO THE CENTRAL MERIDIAN OF UTM ZONE 17 (81° WEST LONGITUDE). DISTANCES SHOWN ON THIS PLAN ARE GROUND AND CAN BE CONVERTED TO GRID BY MULTIPLYING BY THE COMBINED SCALE FACTOR OF 0.99956 BEARING COMPARISONS TO REGISTERED INSTRUMENTS AND PLANS SHOWN ON THIS PLAN ARE ASTRONOMIC BEARINGS. A CLOCKWISE ROTATION OF 000°00'00" CAN BE APPLIED TO THESE ASTRONOMIC BEARING COMPARISONS TO CONVERT TO UTM GRID BEARINGS
POINT ID	NORTHING	EASTING	
A	4945118.87	512307.10	
B	4944856.61	512144.72	
CAUTION: COORDINATES CANNOT, IN THEMSELVES BE USED TO RE-ESTABLISH CORNERS OR BOUNDARIES SHOWN ON THIS PLAN			

SURVEYOR'S CERTIFICATE

I CERTIFY THAT:

- THIS SURVEY AND PLAN ARE CORRECT AND IN ACCORDANCE WITH THE SURVEYS ACT, THE SURVEYORS ACT AND THE LAND TITLES ACT AND THE REGULATIONS MADE UNDER THEM.
- THE SURVEY WAS COMPLETED ON THE 21st DAY OF JULY 2016.

JULY 30th 2016

Neil C. Milne
NEIL C. MILNE,
ONTARIO LAND SURVEYOR

HEWETT AND MILNE LIMITED
ONTARIO LAND SURVEYORS

302, 8th STREET EAST,
OWEN SOUND, ONTARIO
P. O. BOX 112, N4K 5P1
TEL. 519-376-5528
FAX 519-376-5534
EMAIL : handm@bmts.com

DRAWN BY	FILE #	FILE LOCATION
TU	16-60	