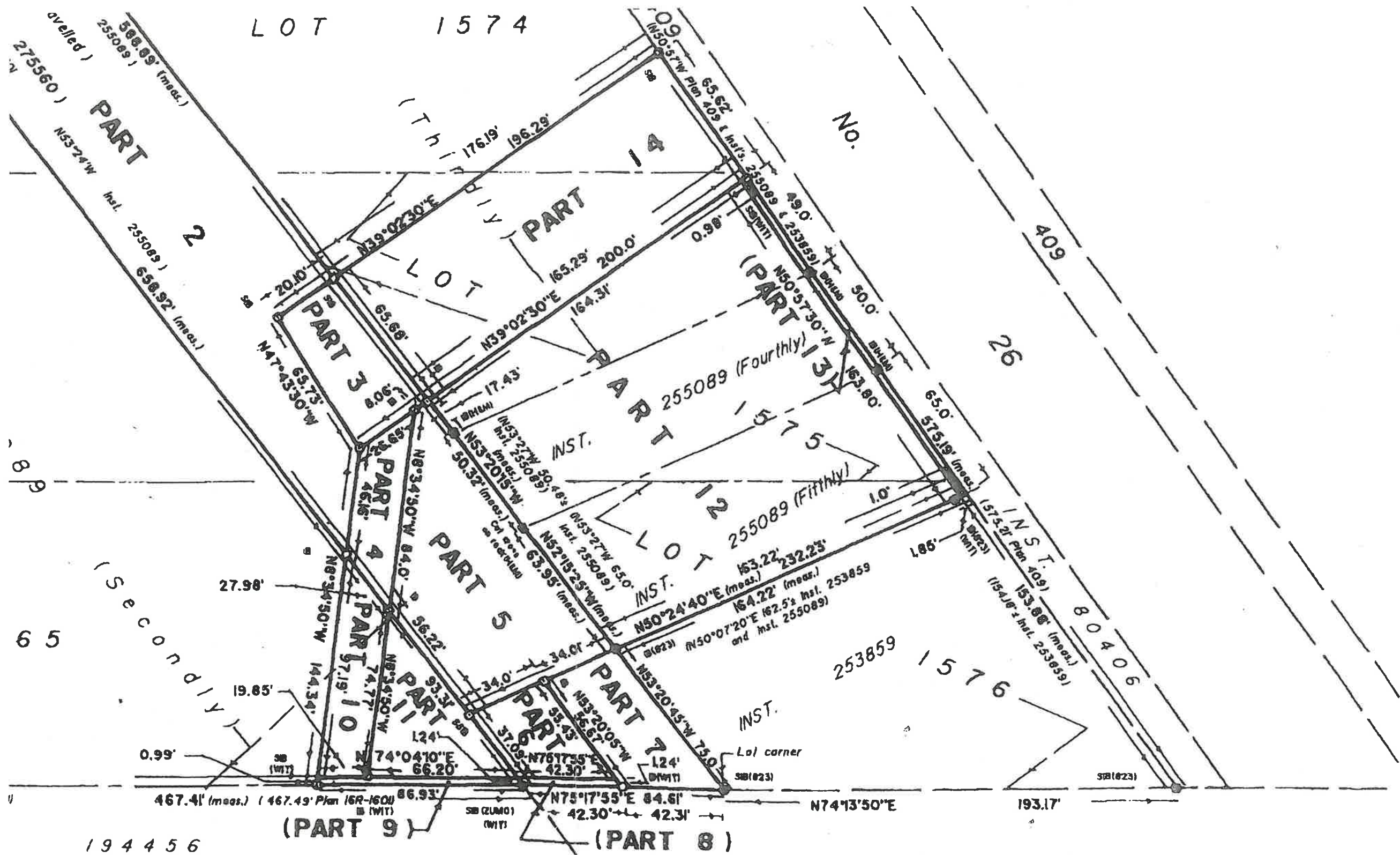


LOT 1574



194456
(KNOWN AS HELEN STREET)

HELEN STREET (ESTABLISHED BY REG. PLAN 76)

LOT
1577

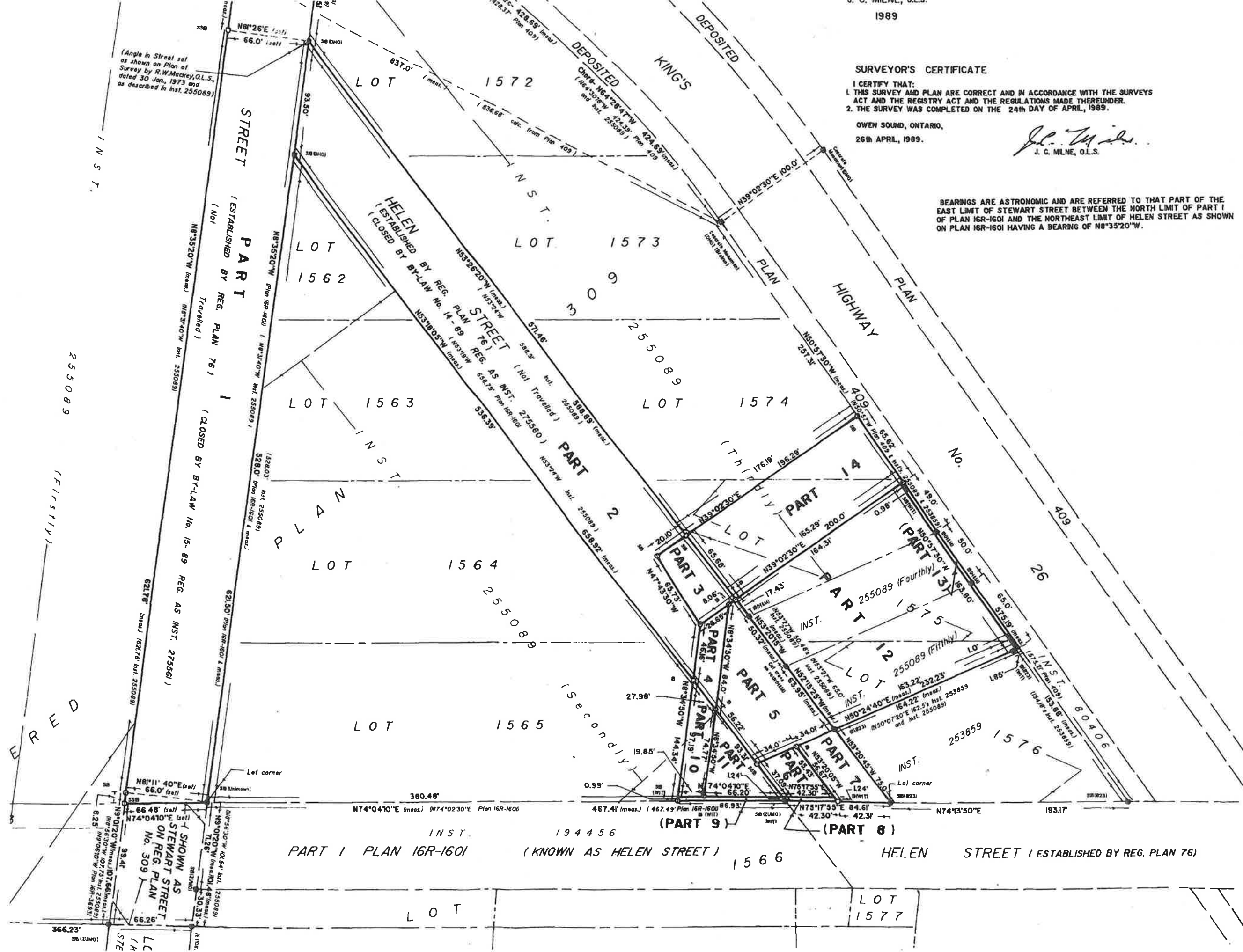
SURVEYOR'S CERTIFICATE

I CERTIFY THAT:
1. THIS SURVEY AND PLAN ARE CORRECT AND IN ACCORDANCE WITH THE SURVEYS ACT AND THE REGISTRY ACT AND THE REGULATIONS MADE THEREUNDER.
2. THE SURVEY WAS COMPLETED ON THE 24th DAY OF APRIL, 1989.

OWEN SOUND, ONTARIO,
26th APRIL, 1989.

J. C. Milne
J. C. MILNE, O.L.S.

BEARINGS ARE ASTRONOMIC AND ARE REFERRED TO THAT PART OF THE EAST LIMIT OF STEWART STREET BETWEEN THE NORTH LIMIT OF PART I OF PLAN 16R-160I AND THE NORTHEAST LIMIT OF HELEN STREET AS SHOWN ON PLAN 16R-160I HAVING A BEARING OF N8°35'20"W.



This Schedule is attached to and forms part of the Agreement of Purchase and Sale between:

BUYER: Applevale Properties Limited

SELLER: JAMES V. THOMPSON CHIROPRACTIC PROFESSIONAL CORPORATION

for the property known as Alberry Court and Helen Street

Meaford

ON _____ dated the 24

November

20.20

day of

ART

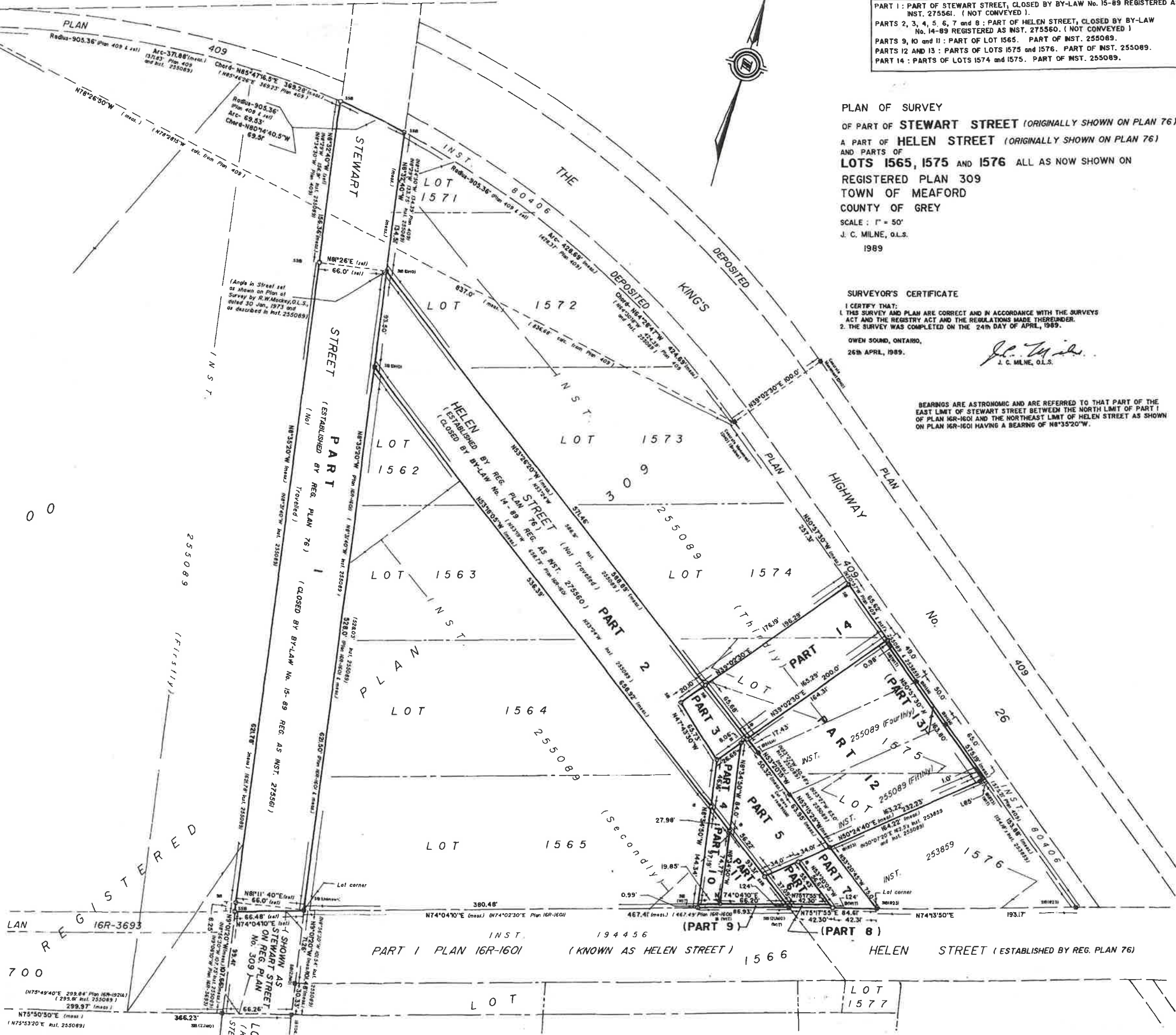
This form must be initialed by all parties to the Agreement of Purchase and Sale.

INITIALS OF BUYER(S):

INITIALS OF SELLER(S):

The trademarks REALTOR®, REALTOR®, MLS®, Multiple Listing Services® and associated logos are owned or controlled by The Canadian Real Estate Association (CREA) and identify the real estate professionals who are members of CREA and the quality of services they provide. Used under license. © 2020 Ontario Real Estate Association ("OREA"). All rights reserved. This form was developed by OREA for the use and reproduction by its members only. Any other use or reproduction is prohibited except with prior written consent of OREA. Do not alter when printing or reproducing the standard pre-set portion. OREA bears no liability for your use of this form.

Form 105 Revised 2018 Page 1 of 1



PART I: PART OF STEWART STREET, CLOSED BY BY-LAW No. 15-89 REGISTERED AS INST. 275561. (NOT CONVEYED).
PARTS 2, 3, 4, 5, 6, 7 and 8: PART OF HELEN STREET, CLOSED BY BY-LAW No. 14-89 REGISTERED AS INST. 275560. (NOT CONVEYED)
PARTS 9, 10 and 11: PART OF LOT 1565. PART OF INST. 255089.
PARTS 12 AND 13: PARTS OF LOTS 1575 and 1576. PART OF INST. 255089.
PART 14: PARTS OF LOTS 1574 and 1575. PART OF INST. 255089.

PLAN OF SURVEY
OF PART OF STEWART STREET (ORIGINALLY SHOWN ON PLAN 76)
AND PARTS OF HELEN STREET (ORIGINALLY SHOWN ON PLAN 76)
AND PARTS OF LOTS 1565, 1575 AND 1576 ALL AS NOW SHOWN ON REGISTERED PLAN 309
TOWN OF MEAFORD
COUNTY OF GREY
SCALE: 1" = 50'
J. C. MILNE, O.L.S.
1989

SURVEYOR'S CERTIFICATE
I CERTIFY THAT:
1. THIS SURVEY AND PLAN ARE CORRECT AND IN ACCORDANCE WITH THE SURVEYS ACT AND THE REGULATIONS MADE THEREUNDER.
2. THE SURVEY WAS COMPLETED ON THE 24th DAY OF APRIL, 1989.
OWEN SOUND, ONTARIO,
26th APRIL, 1989.
J. C. Milne
J. C. MILNE, O.L.S.

BEARINGS ARE ASTROMOMIC AND ARE REFERRED TO THAT PART OF THE EAST LIMIT OF STEWART STREET BETWEEN THE NORTH LIMIT OF PART I OF PLAN 16R-1601 AND THE NORTHEAST LIMIT OF HELEN STREET AS SHOWN ON PLAN 16R-1601 HAVING A BEARING OF N8°35'20"W.