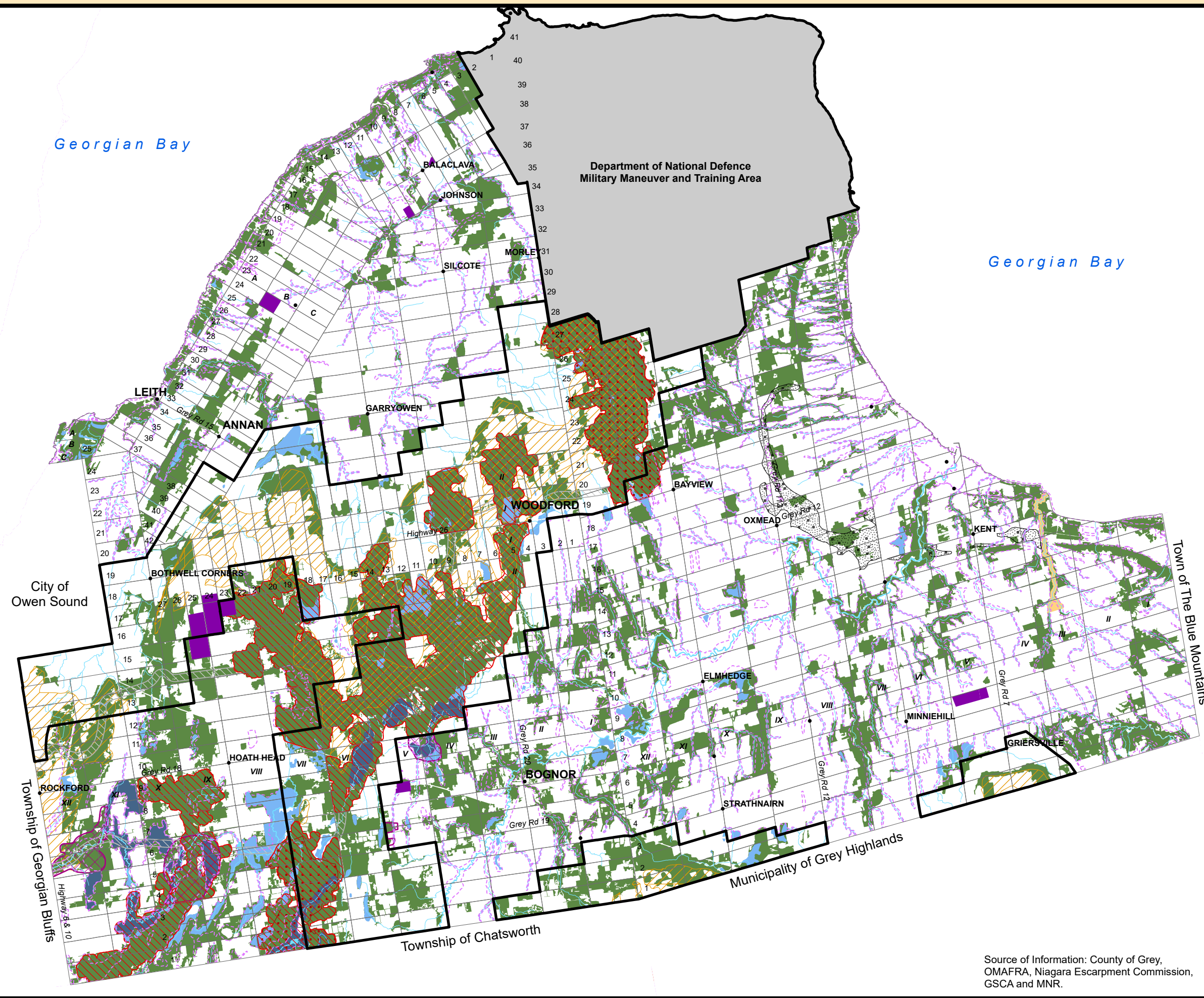


Municipality of Meaford

Official Plan Schedule B

Environmental and Resource Features

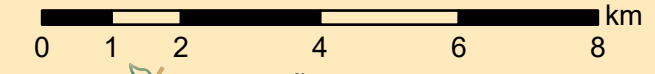


Legend

- ANSI Earth
- ANSI Life
- Karst Topography
- Significant Wildlife Area
- Mineral Resource Extraction; Licensed Pits and Quarries
- Aggregate Resource Area
- Significant Wetlands
- Other Wetlands
- Significant Woodlands Area
- Niagara Escarpment Plan Boundary
- River/Stream
- Grey County NHS Core Areas
- Grey County NHS Linkages
- Grey County Hazard Lands

Note: For visual clarity the Environmental Protection Designation has not been overlain on this schedule. The location of these lands is identified on the Land Use Schedules A & A-1.

Grey County NHS Core Areas, Linkages and Hazard Lands are included as overlays for informational purposes only and are subject to the policies of the Grey County Official Plan.



Source of Information: County of Grey, OMAFRA, Niagara Escarpment Commission, GSCA and MNR.